

borrow

borrow_id
lender_loan_num
inst_abbr
trans_in_inst
request_for_id (FK)
position
loan_date
return_date
transfer_date
cancel_date
due_date
return_status
condition
remove
maj_group
fam_code (FK)
genera
num_specs_total
num_specs_curr
num_returns
num_trans
transfer_status
trans_out_inst
loan_descr
notes
transaction_kind
trans_kind_id

family

fam_code
fam_name
maj_group

loan

loan_id
uc_loan_num
jeps_loan_num
inst_abbr (FK)
trans_inst
request_for_id (FK)
position
loan_date
return_date
transfer_date
cancel_date
recd
return_status
condition
remove
transfer_status
maj_group
fam_code (FK)
genera
uc_num_specs
uc_num_current
uc_num_returns
jeps_num_specs
jeps_num_current
jeps_num_returns
ucdiscrep
jepsdiscrep
loan_descr
notes
fam_name

collection

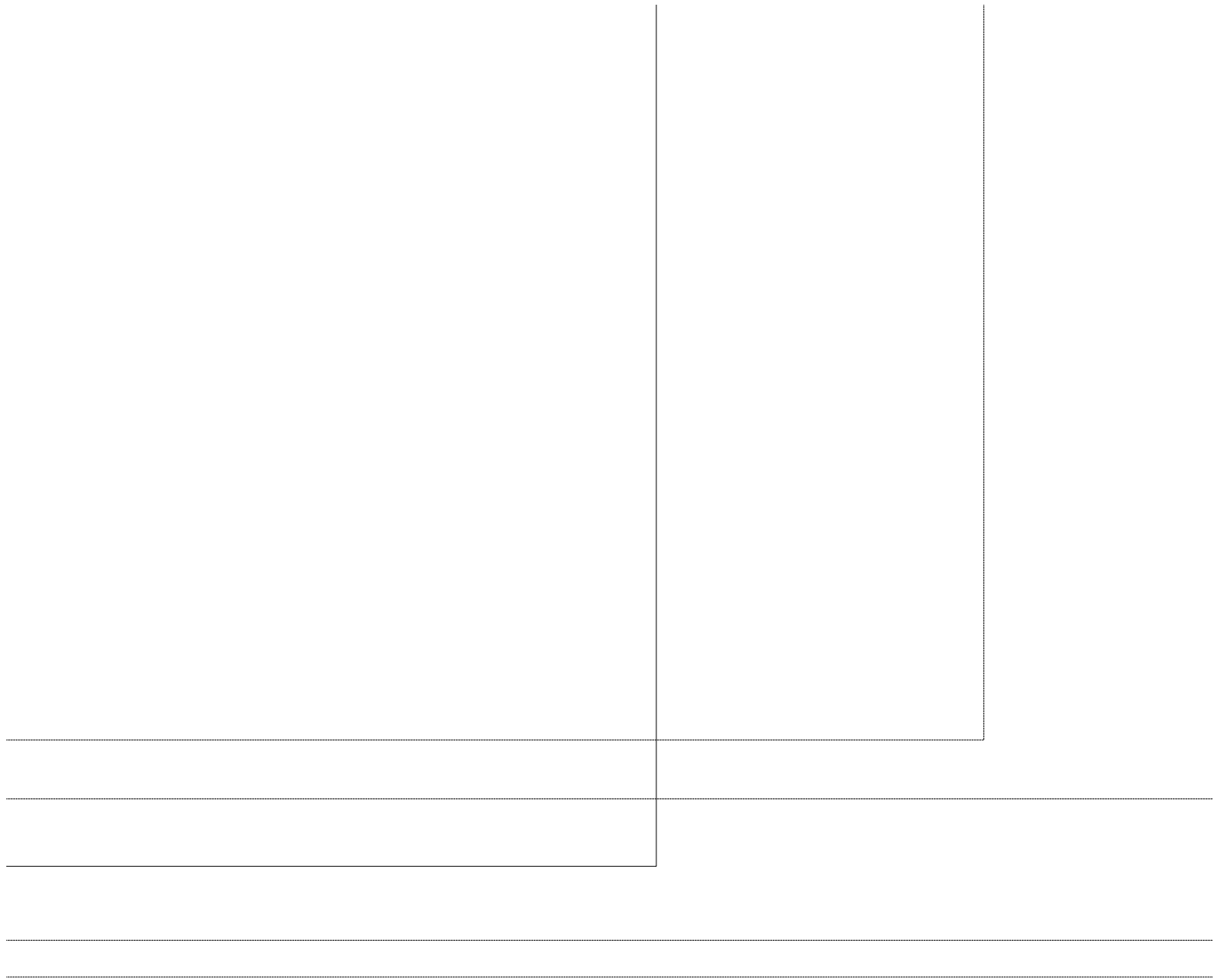
collection_id
coll_committee_id (FK)
coll_num_person_id
coll_num_prefix
coll_num_suffix
coll_number
taxon_id (FK)
loc_country
loc_state
loc_county
loc_other
loc_place
loc_distance
loc_elevation
early_date
late_date
phenology
notes
loc_coords_trs
loc_meridian
loc_lat_deg
loc_long_deg
loc_lat_decimal
loc_long_decimal
coord_flag
loc_coords
loc_verbatim

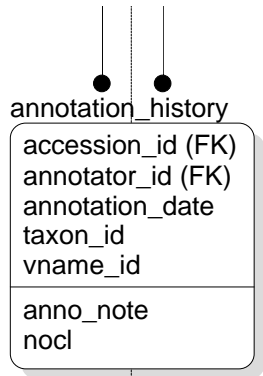
lot

herbarium lot_number

lockind

lockind_id
kind







borr_trans_hist	
borrow_id (FK)	
lender_loan_num	
inst_abbr (FK)	
trans_out_inst	
num_trans	
transfer_status	
transfer_date	

borr_ret_hist	
borrow_id (FK)	
inst_abbr (FK)	
lender_loan_num	
return_status	
num_returns	
return_date	

transfer_history	
loan_id (FK)	
uc_loan_num	
jeps_loan_num	
inst_abbr	
trans_inst	
transfer_date	

return_history	
loan_id (FK)	
uc_loan_num	
jeps_loan_num	
uc_num_return	
jeps_num_return	
return_date	

transaction_kind	
trans_kind_id	

typekind	
typekind_id	
kind	
kind_abbr	

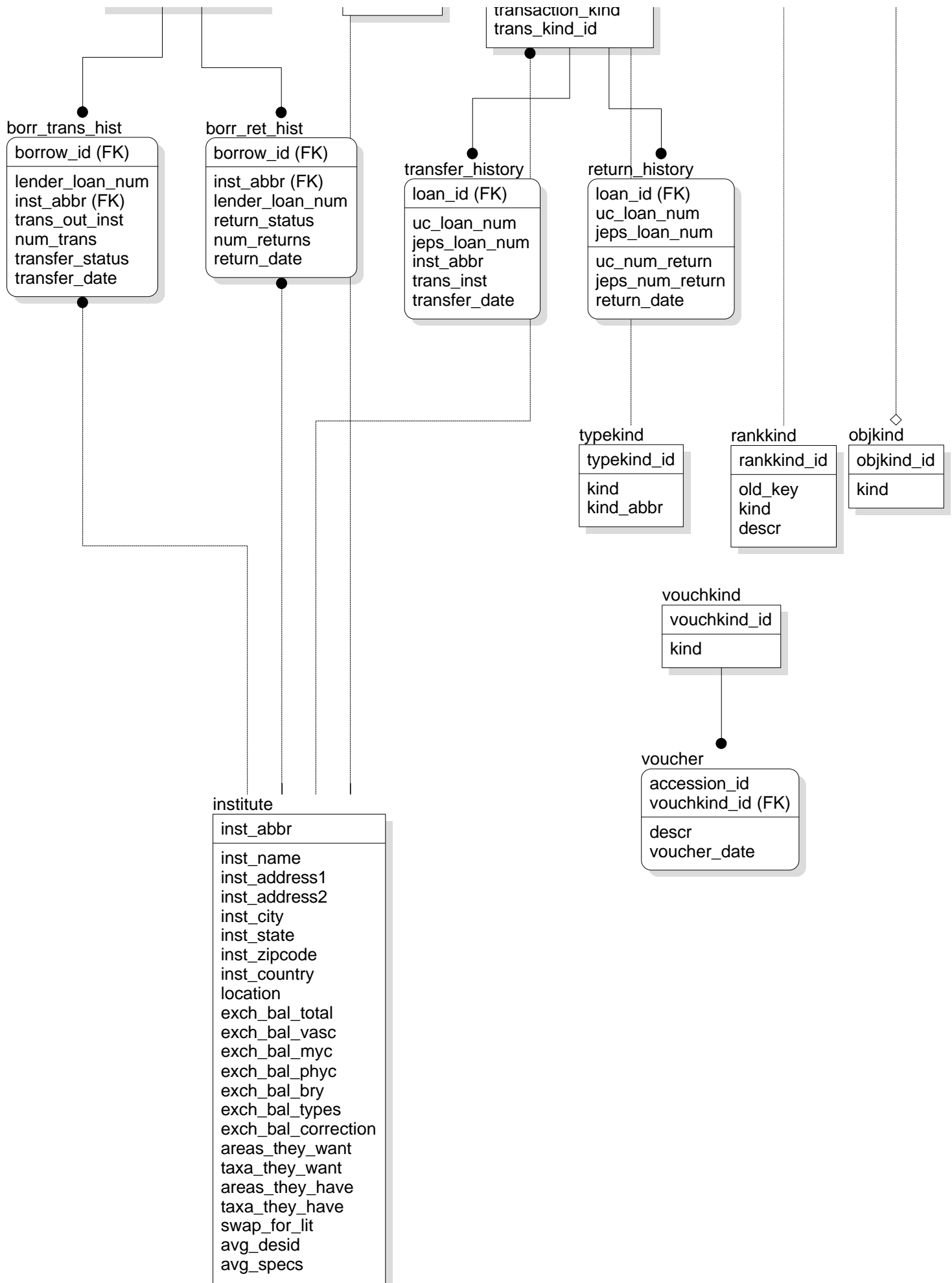
rankkind	
rankkind_id	
old_key	
kind	
descr	

objkind	
objkind_id	
kind	

vouchkind	
vouchkind_id	
kind	

voucher	
accession_id	
vouchkind_id (FK)	
descr	
voucher_date	

institute	
inst_abbr	
inst_name	
inst_address1	
inst_address2	
inst_city	
inst_state	
inst_zipcode	
inst_country	
location	
exch_bal_total	
exch_bal_vasc	
exch_bal_myc	
exch_bal_phyc	
exch_bal_bry	
exch_bal_types	
exch_bal_correction	
areas_they_want	
taxa_they_want	
areas_they_have	
taxa_they_have	
swap_for_lit	
avg_desid	
avg_specs	



ship_date
catalog_date
trans_kind_abbr
trans_kind_id
fund_number
lot_description
num_rejected
num_specimens
inst_abbr
sender_info
sender_id
sent_to
sent_to_id
sender_trans_no
quality_specs
quality_desid

location

loc_id
loc_name
parent_id
loc_hier
lockind_id (FK)
loc_north
loc_south
loc_east
loc_west
loc_descr
loc_src
quad_num

key_sequence

table_name
sequence
pagepad1
pagepad2
pagepad3
pagepad4

common_name

common_name_id
name
data_src_id

subplot

herbarium (FK)
lot_number (FK)
subplot

subplot_description
gift_for_id
maj_group
priority
types_num
ca_num
na_num
mx_num
sa_num
pb_num
as_num
eu_num
af_num
an_num
hort_num

